



Termix VVX Compact 28

Indirect substation for apartment buildings with up to 25 apartments

District heating substation for indirect heating and instantaneous domestic hot water with thermostatic or electronic controls. Designed for wall-mounting.

Application

The Termix VVX Compact 28 is a complete solution for hot water and space heating with optimal safety, efficient energy transfer, service-friendly construction and a compact design. The substation is applicable, if a heat exchanger is required or on a conversion to district heating, where the existing equipment is unsuitable for direct connection.

District heating (DH)

The district heating circuit is prefabricated with a flow controller with integrated control valve as well as thermometers and ball valves.

Heating (HE)

The heating circuit consists of a plate heat exchanger, safety valve, manometer, thermometers, ball valves, drain valve, air valve and circulation pump and can be controlled thermostatically or by an electronic controller with an outdoor temperature sensor. Depending on the application, different heat exchangers can be dimensioned.

Domestic hot water (DHW)

The domestic hot water is prepared in the heat exchanger and the temperature is regulated with thermostatic or electronic controls. The efficient heat exchanger offers exceptionally good heat extraction with high output. No readjustment of the DHW temperature is required after installation and initial setting of the controls. The thermostatic control valve automatically retains the comfort temperature of the hot water, even when the heating system is in reduced operation during summer or if the district heating plant changes operating parameters between summer and winter, either by lowering or increasing the flow temperature of the district heating water and/or the operating pressure in the network.

Options

The substation can be supplied with a fitting piece and sensor pockets for insertion of a heat meter. Furthermore the substation can be supplied with a differential pressure controller and separate motorized valves.

Construction

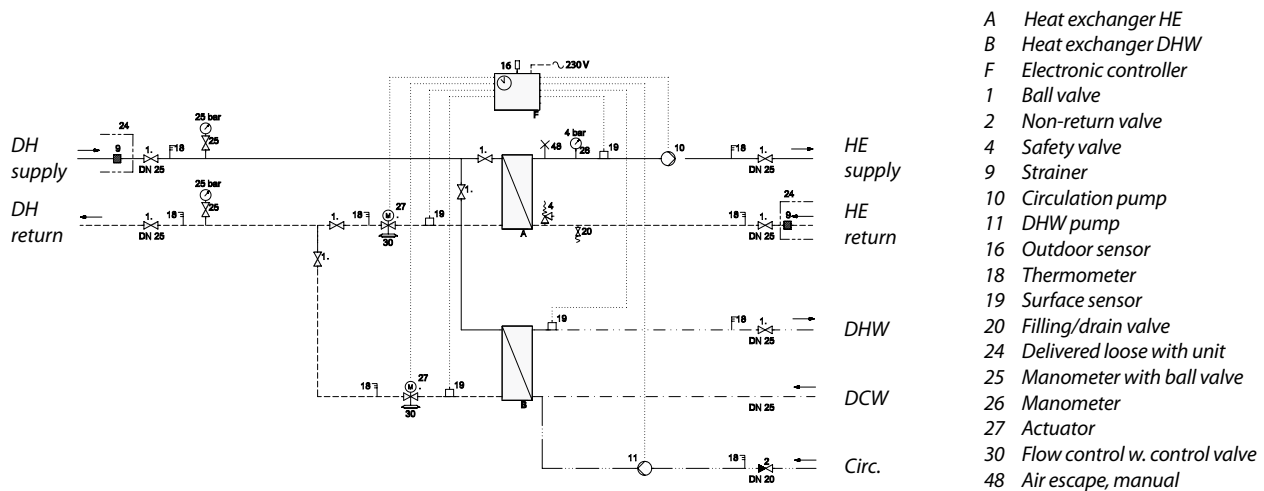
All pipes are made of stainless steel. The connections are made by nuts and gaskets. The Termix VVX Compact 28 can be delivered with a white-lacquered steel cover.

FEATURES AND BENEFITS

- Substation for apartment buildings
- Thermostatic or electronic control of heating and DHW temperature
- Capacity: 150 kW heating, 150 kW DHW
- DHW in sufficient quantity
- Operates independent of differential pressure and flow temperature
- Minimum space required for installation
- Pipes and plate heat exchanger made of stainless steel
- Minimized risk of lime scale and bacteria formation

Termix VVX Compact 28

Circuit diagram - example



Technical parameters:

Nominal pressure: PN 16
 DH supply temperature: $T_{max} = 120\text{ }^{\circ}\text{C}$
 DCW static pressure: $P_{min} = 0,5\text{ bar}$
 Brazing material (HEX): Copper

Weight: approx. 75 kg

Dimensions (mm):
 H 940 x W 750 x D 440

Electrical supply: 230 V AC

Connections:

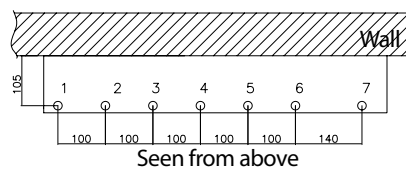
- 1 Heating (HE) supply
- 2 Heating (HE) return
- 3 District heating (DH) supply
- 4 District heating (DH) return
- 5 Circulation
- 6 Domestic hot water (DHW)
- 7 Domestic cold water (DCW)

Connections sizes:

DH + HE + DCW + DHW: DN 25
 Circulation: DN 20

Options:

- White-lacquered steel cover
- Fitting piece and sensor pockets for insertion of a heat meter
- Differential pressure controller and separate motorized valves.
- HEX for charging, complete with controls (VVX-B)



DHW: Capacity examples, 10 °C/50 °C

DHW Capacity kW	Supply flow Primary °C	Return flow Primary °C	Pressure loss Primary kPa	Flow rate Secondary l/h
100	70	22	50	2150
110	70	22	50	2365
120	70	22	50	2580
130	70	22	50	2795
140	70	22	50	3010
150	70	22	50	3225

Heating: Capacity examples

Heating Capacity kW	Heating circuit Primary °C	Heating circuit Secondary °C	Pressure loss Primary kPa	Flow rate Secondary l/h
70	90/45	40/70	50	2007
90	90/45	40/70	50	2580
110	90/45	40/70	50	3153
120	90/45	40/70	50	3440
140	90/45	40/70	50	4013
150	90/45	40/70	50	4300

Gemina Termix A/S · Member of the Danfoss Group · Navervej 15-17 · DK-7451 Sunds · Denmark

Tel.: +45 9714 1444 · Fax: +45 9714 1159 · mail@termix.dk · www.heating.danfoss.com

Danfoss can accept no responsibility for possible errors in catalogues, brochures and other printed material. Danfoss reserves the right to alter its products without notice. This also applies to products already on order provided that such alterations can be made without consequential changes being necessary in specifications already agreed. All trademarks in this material are property of the respective companies. Danfoss and the Danfoss logotype are trademarks of Danfoss A/S. All rights reserved.