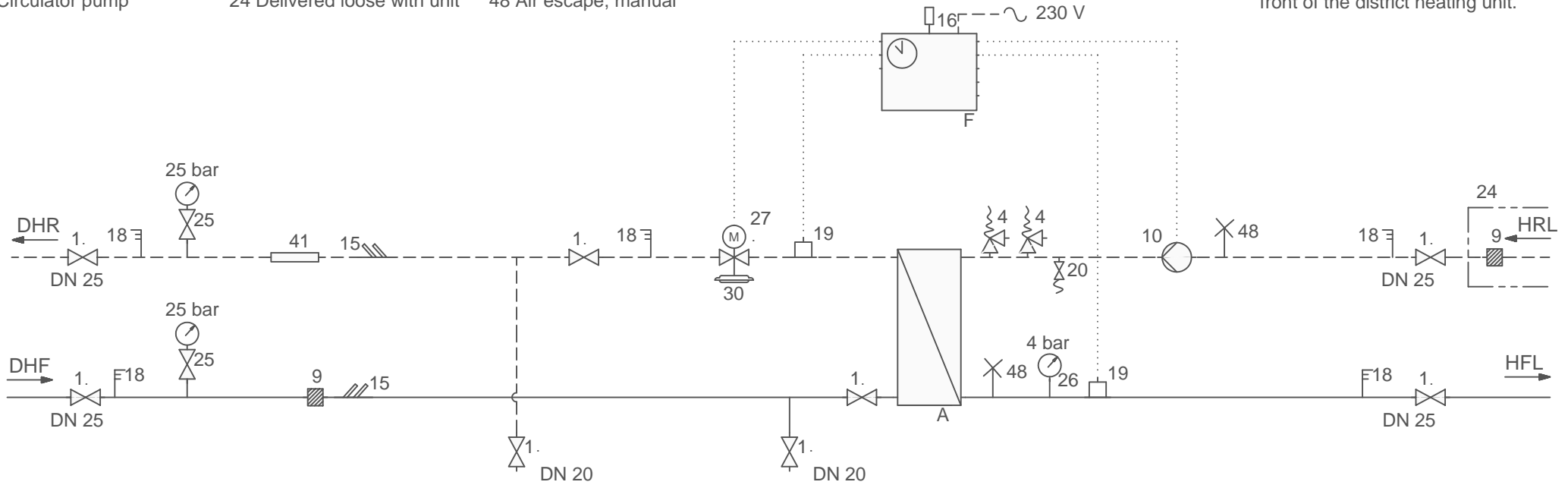


- A Heat exchanger
- F Electronic controller
- 1 Ball valve
- 4 Safety valve
- 9 Strainer
- 10 Circulator pump
- 15 Sensor pocket, double
- 16 Outdoor sensor
- 18 Thermometer
- 19 Surface sensor
- 20 Filling/drain valve
- 24 Delivered loose with unit
- 25 Manometer with ball valve
- 26 Manometer
- 27A Actuator with spring return
- 30 Flow control w. control valve
- 41 Fitting piece, energy meter
- 48 Air escape, manual

Obs:
 Gemina Termix recommends the mounting of balancing valves on the main central heating pipes and on the central heating return pipe directly in front of the district heating unit.



Gemina • Termix
 Navervej 15-17 DK 7451 Sunds
 Tlf.+4597141444 Fax+4597141159
 mail@termix.dk

Contr.:	Date:	Sign:
xx xx xx xx	xx xx xx	xxx
Drwg. no.:		
CS VX 28 UK		

Title:		
Termix Compactstation type VX 28		
Diagram		
District Heating substation		
Rev:	Date:	Sign.: